

An aerial photograph of a tropical beach. The top half of the image is filled with a dense forest of green palm trees. Below the trees is a wide, light-colored sandy beach. The bottom half of the image shows the ocean with turquoise water and white, foamy waves crashing onto the shore.

RAK
CERAMICS

Maldives

POOL EXPERIENCE

04

Alifushi Grey

08

Thoddu Wheat

12

Mulak Green

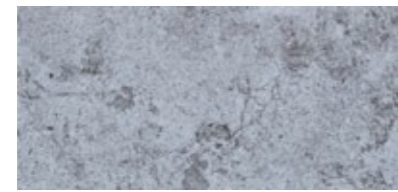
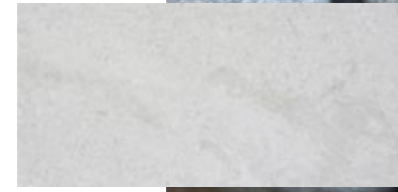
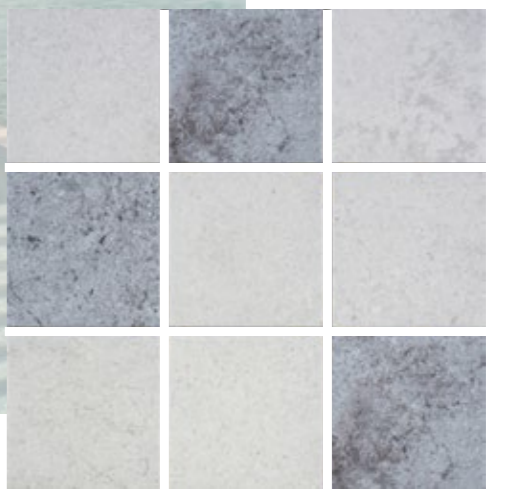
16

Vaavu Blue



Maldives

Discover the captivating charm of our newest mosaic porcelain tile collection, inspired by the luxury of the Maldives. Each tile invites you to escape to paradise, offering a serene and sophisticated touch to any outdoor setting. Elevate your poolside or landscape design with Maldives Mosaics. Expertly engineered with a water absorption rate below %0.5, these tiles exemplify exceptional strength and long-lasting beauty. Ideal for swimming pools and water features, they combine low-maintenance functionality with refined aesthetics. Designed with architects and designers in mind, Maldives Mosaics outperform traditional stone, delivering practical advantages and visual appeal. Choose from a rich palette of colors—from soothing blues and greens to natural sandstone and greys—allowing you to create a space that reflects your unique vision. Maldives Mosaics bring a luxurious finish that earns praise from design professionals. With customizable color ratios, you can tailor every detail to suit your desired ambience.

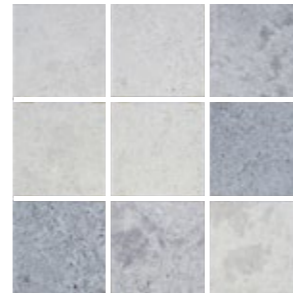


Alifushi Grey

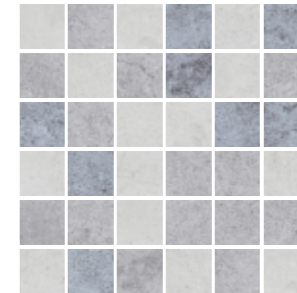


Alifushi Grey

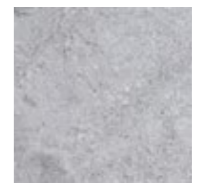
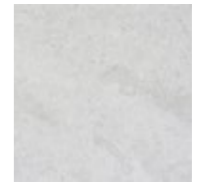
Immerse yourself in the subtle elegance of **Alifushi Grey**—a sophisticated blend of three harmoniously selected shades: Light, Mid, and Dark. Inspired by the raw, natural beauty of Alifushi—one of the inhabited islands of Raa Atoll in the Maldives, whose name means “family island” in the local Dhivehi language—this collection captures the spirit of the ocean, the stone, and the sky. The grey tones of Alifushi’s stones and the boundless blues of sea and sky serve as the creative heartbeat of this collection. Each tile features a graceful tri-colour blend, arranged in a naturally random pattern that evokes the organic textures of the island landscape. Whether laid beside a shimmering pool or under the vast sky, these tiles create a serene, effortlessly cohesive aesthetic. With Maldives Mosaics, bring the timeless beauty of nature into your space—where every detail tells a story of island elegance.



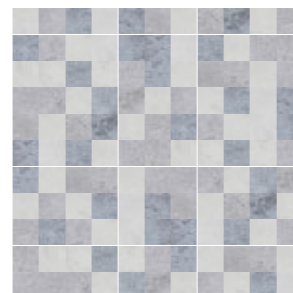
10X10 CM
A10SMADS-ALF.IOXOT



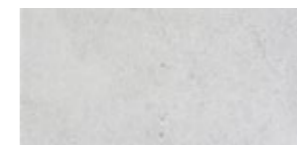
5X5 CM
AM2SMADS-ALF.MOXOU



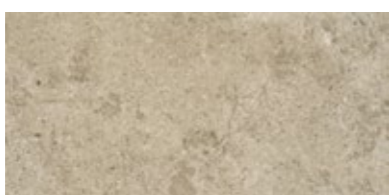
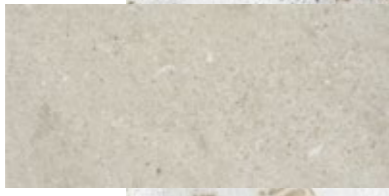
Shades



2.5X2.5 CM
AM1SMADS-ALF.MOXOU



11X24 CM
A21SMADS-ALF.IOXOU

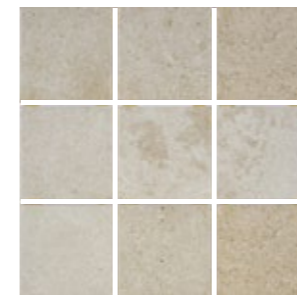


Thoddu Wheat

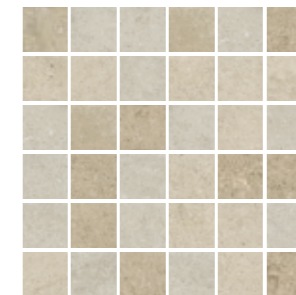


Thoddu Wheat

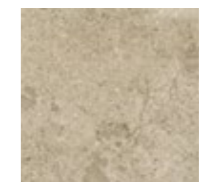
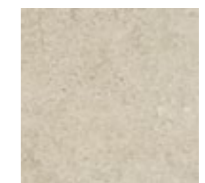
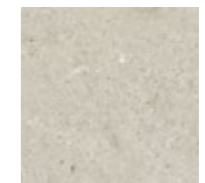
Immerse yourself in the serene beauty of Thoddoo's sandy shores and crystal-clear waters with **Thoddu Wheat** — a captivating mosaic collection that brings the coastal charm of one of Alif Alif Atoll's inhabited islands into your outdoor haven. Designed to evoke the tranquil spirit of the Maldives, this range transforms any space into a peaceful retreat, echoing the untouched allure of Thoddoo's pristine beaches. The warm, sun-kissed tones of island sand form the creative soul of this collection. Each tile showcases a refined tri-colour composition—Light, Mid, and Deep Wheat—arranged in a naturally random pattern that mirrors the soft, windswept textures of the island landscape. Ideal for pool surrounds, garden paths, or patio areas, Thoddu Wheat offers a seamless blend of nature-inspired beauty and durable craftsmanship. Let your design reflect the calm and harmony of Maldivian shores—where every step feels like a walk along the beach.



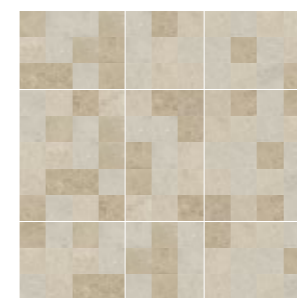
10X10 CM
A10SMADS-TDW.IOXOT



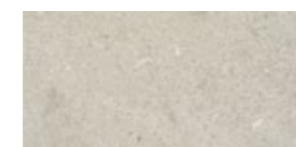
5X5 CM
AM2SMADS-TDW.MOXOU



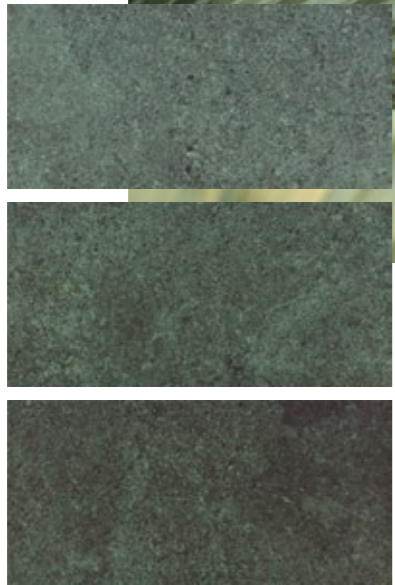
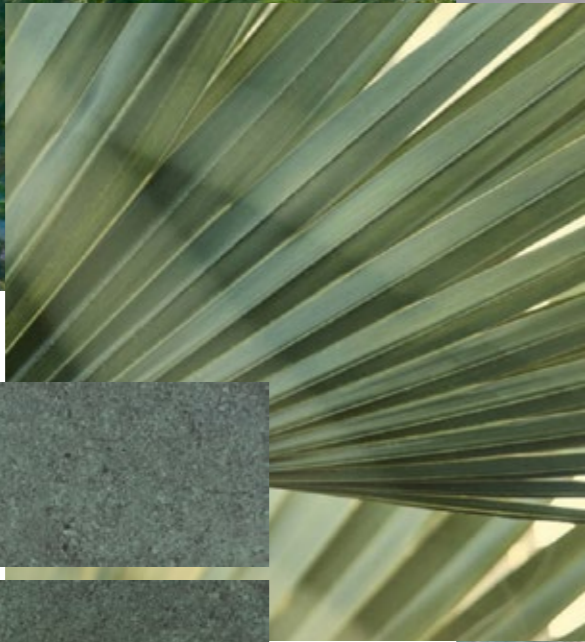
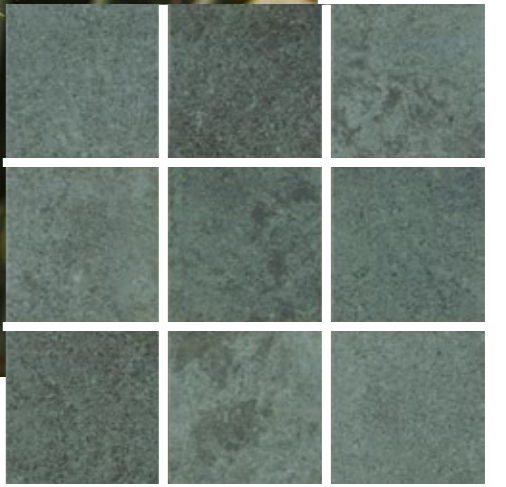
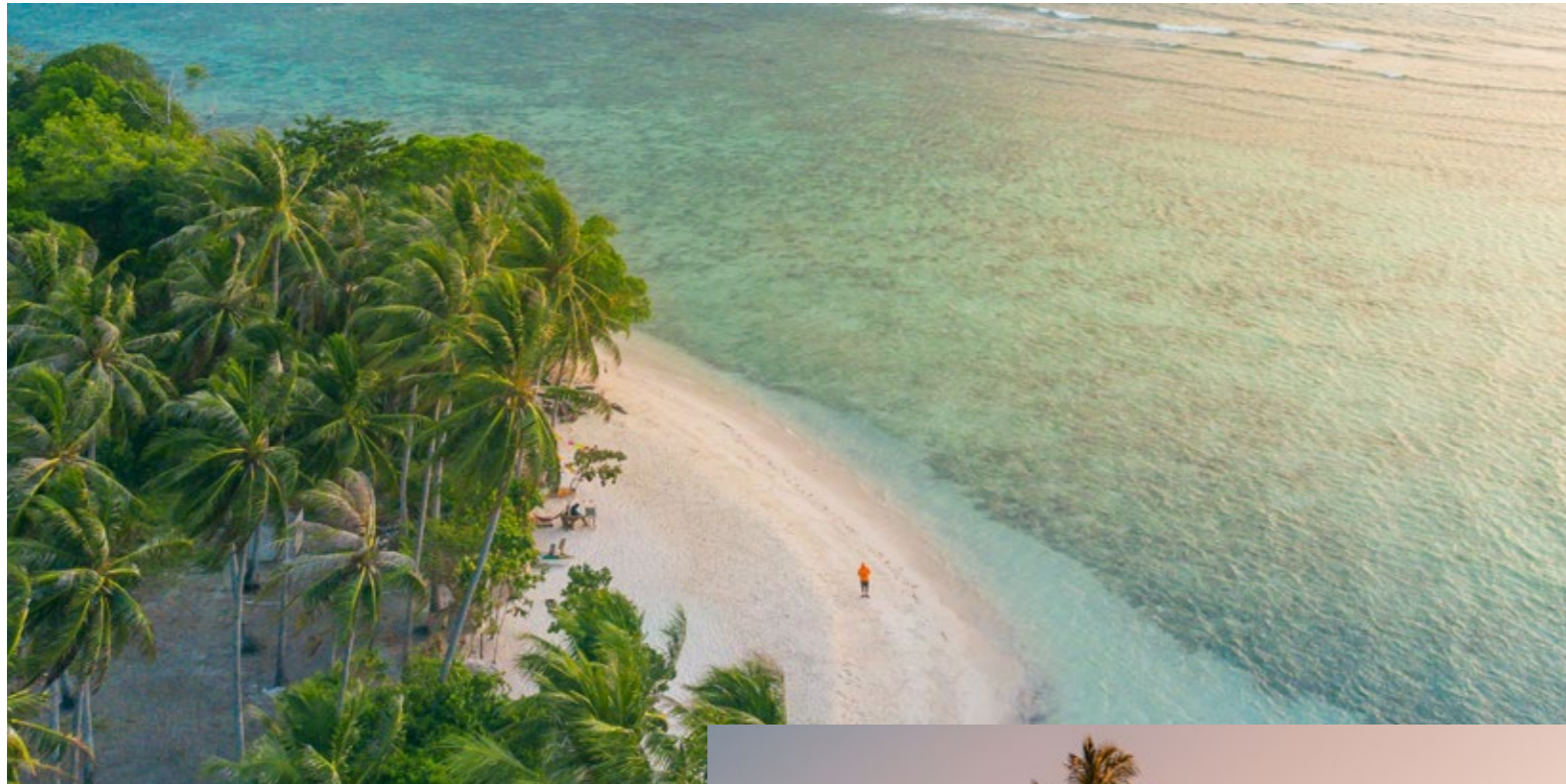
Shades



2.5X2.5 CM
AM1SMADS-TDW.MOXOU



11X24 CM
A21SMADS-TDW.IOXOU

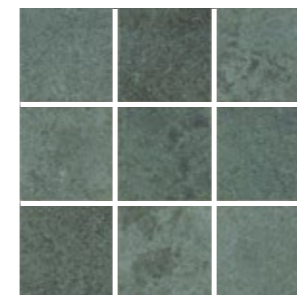


Mulak Green

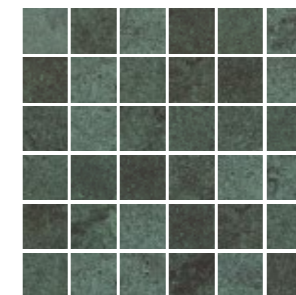


Mulak Green

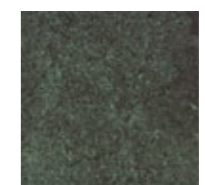
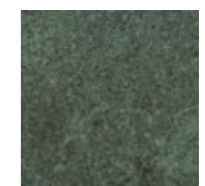
Mulaku Atoll, stretching 48 km across the Indian Ocean, is composed of 33 islands, only 9 of which are inhabited. Despite its sparse population, the atoll is renowned for its unspoiled natural beauty—lush greenery, pristine beaches, and tranquil lagoons—making it a hidden gem that draws visitors from around the globe seeking an untouched tropical escape. Now, you can bring the essence of this serene paradise into your home with our breathtaking **Mulaku-inspired mosaic tiles**. Infused with soft green tones that reflect the atoll's rich vegetation and crystalline waters, these tiles capture the peaceful spirit and ecological richness of the Maldives. Every piece tells a story of cultural heritage and island serenity, designed to create a calming, luxurious ambience in any space. Perfect for indoor and outdoor use, they harmoniously blend elegance with the soul of nature. Transform your surroundings into a sanctuary of tropical charm—where the magic of Mulaku lives on in every detail.



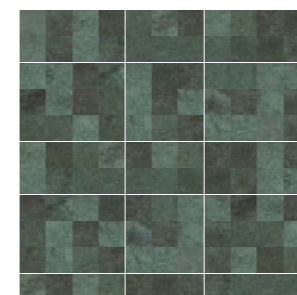
10X10 CM
A10SMADS-MKG.IOXOT



5X5 CM
AM2SMADS-MKG.MOXOU



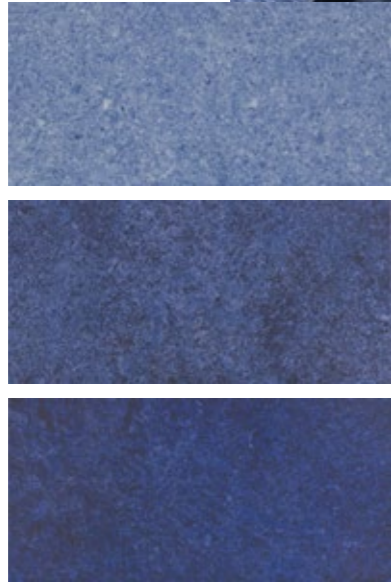
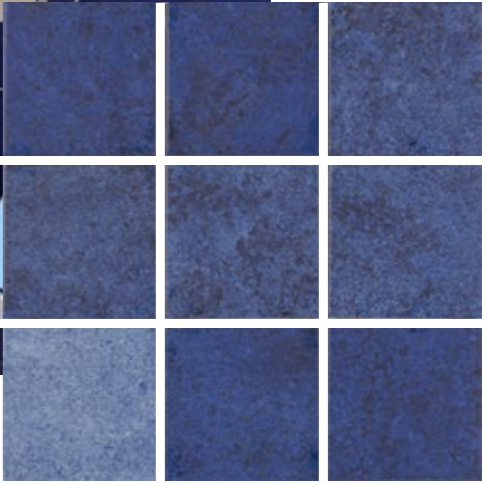
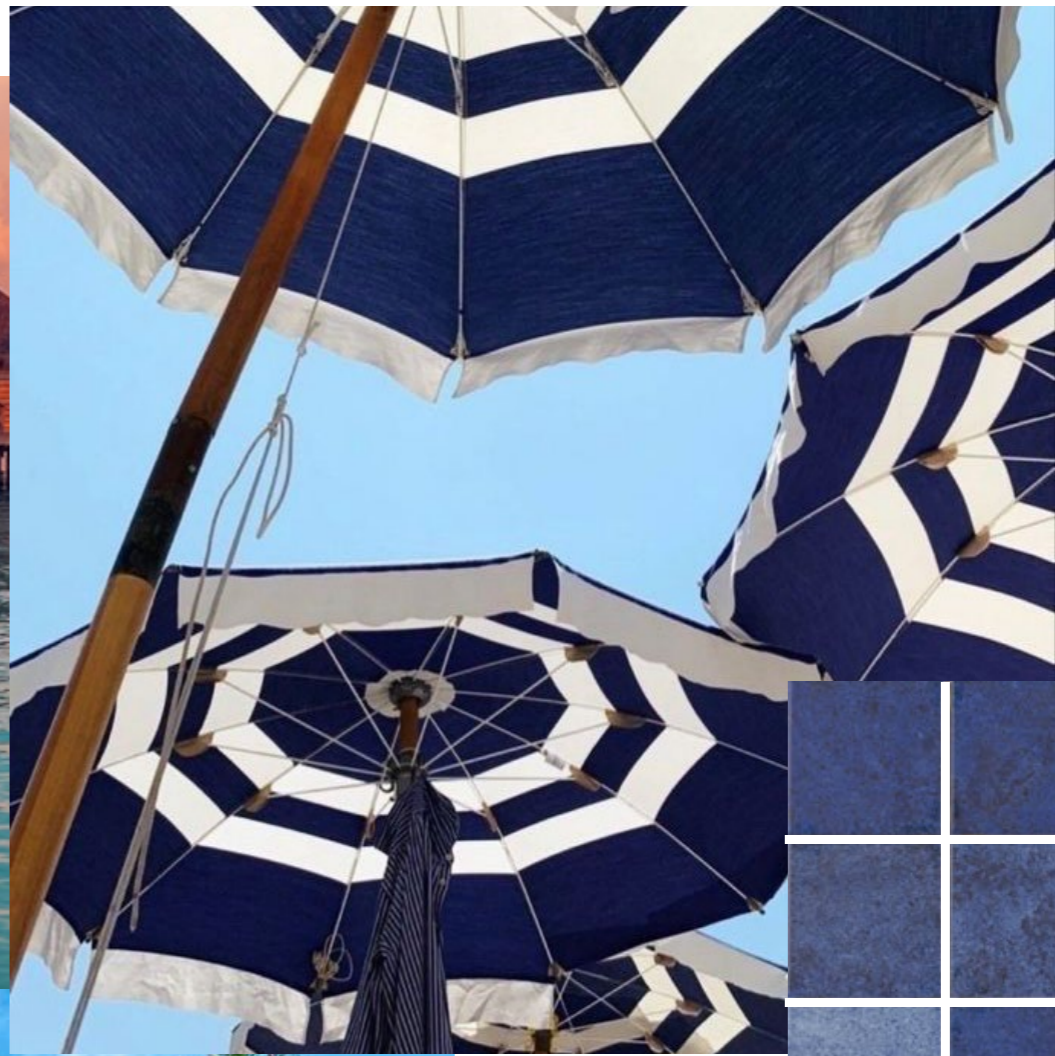
Shades



2.5X2.5 CM
AM1SMADS-MKG.MOXOU



11X24 CM
A21SMADS-MKG.IOXOU



Vaavu Blue

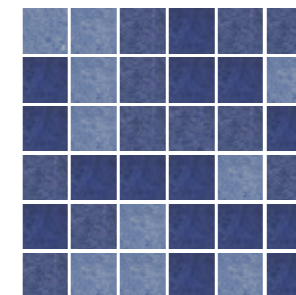


Vaavu Blue

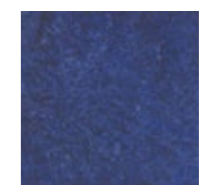
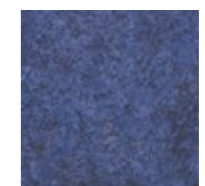
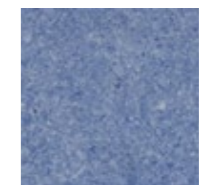
A true haven for adventurers and scuba divers, Vaavu Atoll is home to just five inhabited islands, leaving much of its landscape untouched and teeming with natural splendor. Its secluded white-sand beaches and vivid marine life create a scene so breathtaking that even Maldivians—accustomed to paradise—regard it as one of the country’s most beautiful regions. With our **Vaavu Blue** mosaic collection, you can bring this enchanting tropical allure into your own space. Inspired by the shimmering, crystalline waters that gently surround the Vaavu Islands, each tile is a tribute to the ocean’s depth and clarity. Meticulously crafted, this collection is designed to transform pools, patios, and outdoor spaces into tranquil retreats, infusing them with the calming blues of the sea. Let **Vaavu Blue** turn your environment into a personal oasis—where every glance evokes the serenity of Maldivian waters, and every tile tells a story of underwater wonder. Ideal for contemporary or nature-inspired designs, it captures the soul of the tropics with unmatched elegance.



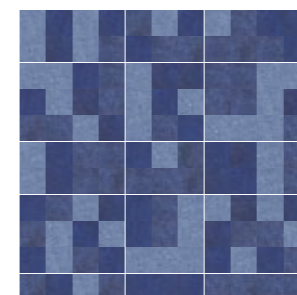
10X10 CM
A10SMADS-VAB.IOX0T



5X5 CM
AM2SMADS-VAB.MOXOU



Shades



2.5X2.5 CM
AM1SMADS-VAB.MOXOU



11X24 CM
A21SMADS-VAB.IOXOU

TECHNICAL SPECIFICATIONS

NOMINAL SIZE: 10X10 CM
 NOMINAL THICKNESS: 6.5MM
 TYPE OF PRODUCT: GRES WHITE BODY CERAMIC TILE
 NATURE OF SURFACE: GLAZED/MATT
 GROUP: BLB
 REF. STANDARD: INTERNATIONAL STANDARD ISO 13006:2018

Test Description	Standard Test Method	Standard Requirements	RAK Ceramics Specifications
Surface Quality	BS EN ISO 10545 -2	A minimum of 95% of the tiles are to be free from visible defects	Minimum of 95% of the tiles are free from visible defects
Length & Width	BS EN ISO 10545-2	± 0.9 mm	± 0.9 mm
Thickness	BS EN ISO 10545-2	± 5 mm	± 5 mm
Straightness of Sides	BS EN ISO 10545-2	± 0.8 mm	± 0.8 mm
Rectangularity	BS EN ISO 10545-2	± 0.8 mm	± 0.8 mm
Center Curvature	BS EN ISO 10545-2	± 0.8 mm	± 0.8 mm
Edge Curvature	BS EN ISO 10545-2	± 0.8 mm	± 0.8 mm
Warpage	BS EN ISO 10545-2	± 0.8 mm	± 0.8 mm
Water Absorption	BS EN ISO 10545-3	0.5% < E ≤ 3.0 %	0.5% < E ≤ 3.0 %
Breaking Strength	BS EN ISO 10545-4	≤ 700 N	≤ 900 N
Modulus of Rupture	BS EN ISO 10545-4	≤ 30 N/mm ²	≤ 35 N/mm ²
Surface Abrasion Resistance	BS EN ISO 10545-7	Manufacturer to state abrasion class	PEI Class 3
Coefficient of Linear Thermal Expansion	BS EN ISO 10545-8	Test method available	≤ 7 X 10 ⁻² /°C
Resistance to Thermal Shock	BS EN ISO 10545-9	Test method available	No visible defect
Crazing Resistance	BS EN ISO 10545-11	Required	No crazing
Frost Resistance	BS EN ISO 10545-12	Required	No visible damage
Resistance to household chemicals & swimming, pool salts	BS EN ISO 10545-13	Minimum Class B	Class A No visible effect
Resistance to low concentrations acids & alkalis	BS EN ISO 10545-13	Manufacturer to state classification	Class LA No visible effect
Resistance to Stains	BS EN ISO 10545-14	Minimum Class 3	Min. Class 4 Stains removed

Note: This Technical Specification is applicable only to tiles in Choice "A".

NOMINAL SIZE: 11.7 X 24.5 CM
 NOMINAL THICKNESS: 8.0MM
 TYPE OF PRODUCT: GRES WHITE BODY CERAMIC TILE
 NATURE OF SURFACE: GLAZED/MATT
 GROUP: BLB
 REF. STANDARD: INTERNATIONAL STANDARD ISO 13006:2018

Test Description	Standard Test Method	Standard Requirements	RAK Ceramics Specifications
Surface Quality	BS EN ISO 10545 -2	A minimum of 95% of the tiles are to be free from visible defects	Minimum of 95% of the tiles are free from visible defects
Length & Width	BS EN ISO 10545-2	± 0.6 %	± 0.6 %
Thickness	BS EN ISO 10545-2	± 5 %	± 5 %
Straightness of Sides	BS EN ISO 10545-2	± 0.5 %	± 0.5 %
Rectangularity	BS EN ISO 10545-2	± 0.5 %	± 0.5 %
Center Curvature	BS EN ISO 10545-2	± 0.5 %	± 0.5 %
Edge Curvature	BS EN ISO 10545-2	± 0.5 %	± 0.5 %
Warpage	BS EN ISO 10545-2	± 0.5 %	± 0.5 %
Water Absorption	BS EN ISO 10545-3	0.5% < E ≤ 3.0 %	0.5% < E ≤ 3.0 %
Breaking Strength	BS EN ISO 10545-4	≤ 1100 N	≤ 1300 N
Modulus of Rupture	BS EN ISO 10545-4	≤ 30 N/mm ²	≤ 35 N/mm ²
Surface Abrasion Resistance	BS EN ISO 10545-7	Manufacturer to state abrasion class	PEI Class 3
Coefficient of Linear Thermal Expansion	BS EN ISO 10545-8	Test method available	≤ 7 X 10 ⁻² /°C
Resistance to Thermal Shock	BS EN ISO 10545-9	Test method available	No visible defect
Crazing Resistance	BS EN ISO 10545-11	Required	No crazing
Frost Resistance	BS EN ISO 10545-12	Required	No visible damage
Resistance to household chemicals & swimming, pool salts	BS EN ISO 10545-13	Minimum Class B	Class A No visible effect
Resistance to low concentrations acids & alkalis	BS EN ISO 10545-13	Manufacturer to state classification	Class LA No visible effect
Resistance to Stains	BS EN ISO 10545-14	Minimum Class 3	Min. Class 4 Stains removed

Note: This Technical Specification is applicable only to tiles in Choice "A".

TECHNICAL SPECIFICATIONS

TECHNICAL FEATURES

GRES WHITE BODY CERAMIC TILE (BLB):

White body Ceramic tiles are made with finest quality clays and with chamotte (a ceramic raw material with high percentage of silica). These raw materials are submitted to dry grinding and suitably mixed and wet and then pressed with hydraulic presses. Quick-cycle support firing is obtained via roller kilns reaching temperatures of approximately 1130 °C. After biscuit glazing, the vitrified product is sintered in a single-layer roller kiln at approximately 1030 °C. The resulting wall tiles have an average bending strength that is higher than 16 N/mm² in accordance with the UNI EN ISO10545-4 standard test method and a water absorption level that is higher than 10 %; they belong to the BIII (GL) group according to the International Standard ISO 13006 and UNI EN 14411 standard. This class of products shows virtually no shrinkage during firing; therefore such dimensional consistency results in extremely easy laying.

ADVICE ON LAYING

White body tiles can be laid using either tile adhesives or cement mortar. Under no circumstances should the tiles be wet before laying when using acrylic or vinyl resin based adhesives or two- component organic solvent based adhesives. When laying large sized tiles it is best to adopt the two layer spreading method and, when the laying surface is very large, to provide for suitable expansion joints which must not be spaced more than 4-5 linear meters apart from one another.

IMPORTANT POINTS TO REMEMBER WHILE LAYING THESE TILES

When laying on wet concrete or plaster, leave to dry for at least one week for each centimetre of thickness. When laying on brick, never lay on tile adhesive measuring more than 4-5 mm in thickness. For laying on flexible supports (for example plasterboard panels, polymer panels, etc.) which may result in movement of the tiles, we advise laying on tile adhesive measuring no more than 2-3 mm in thickness and to use class C2 or D1 glues. For laying on waterproof brick, which prevents the release of damp, we advise laying on tile adhesive measuring no more than 3 mm in thickness and to use class C2 or D1 glues. Avoid laying without expansion joints or joints where stress due to expansion is released directly onto the tile.





RAK
CERAMICS