

# ROCKÆR

SERIES

Porcelain Tiles



# RAK

CERAMICS

ROCKER  
SERIES



## Rocker Series

- DESIGN PREFERRED BY ARCHITECT FOR BEAUTIFUL AESTHETIC
- HAND FEEL FINISH DUE TO LIGHT STRUCTURED PUNCH
- MATT EFFECT WITH NATURAL EARTHY COLOR TONALITY
- GRES PORCELAIN BODY CAN BE USED IN BOTH WALL AND FLOOR

# ROCKER



FLOOR TILES | WALL TILES

## Upcoming



9GP ROCKER BOND LBR



9GP ROCKER BOND BHL



9GP ROCKER BOND DBR

## SIZE

30x60 CM



# ROCKER

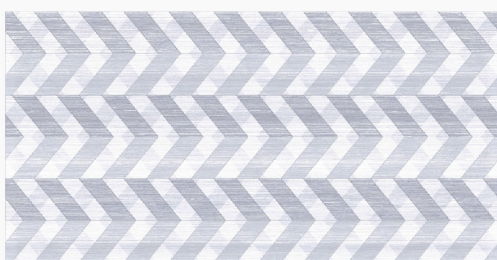


## FLOOR TILES | WALL TILES

### Upcoming



9GP ROCKER BOND LGY



9GP ROCKER BOND GHL



9GP ROCKER BOND DGY

### SIZE

30x60 CM





Wall: 9GP ROCKER BOND LGY  
9GP ROCKER BOND GH-L  
9GP ROCKER BOND DGY

ROCKØR  
SERIES

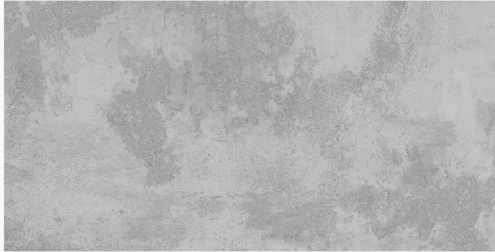


# ROCKER

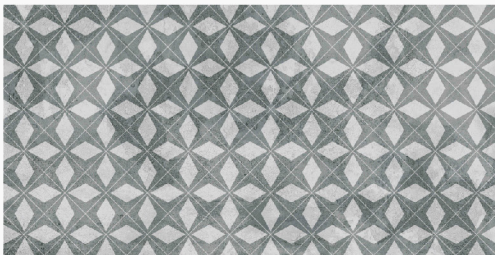


FLOOR TILES | WALL TILES

## Upcoming



9GP ROCKER MAPLE LG



9GP ROCKER MAPLE HL



9GP ROCKER MAPLE DG

## SIZE

30x60 CM

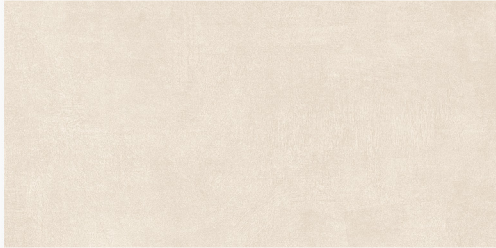




# ROCKER



## FLOOR TILES | WALL TILES



9GP ROCKER MUD LBR



9GP ROCKER MUD BR HL



9GP ROCKER MUD DBR

## SIZE

30x60 CM





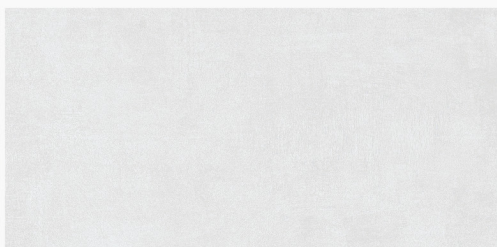
Wall: 9GP ROCKER MAPLE LG  
9GP ROCKER MAPLE HL  
9GP ROCKER MAPLE DG



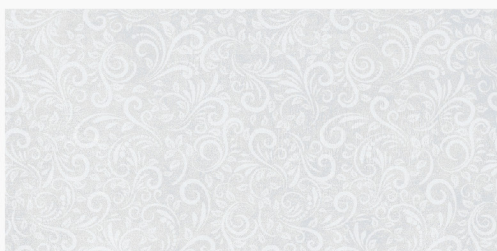
# ROCKER



FLOOR TILES | WALL TILES



9GP ROCKER MUD LGY



9GP ROCKER MUD LHL



9GP ROCKER MUD DHL



9GP ROCKER MUD DGY

## SIZE

30x60 CM



# ROCKER



## FLOOR TILES | WALL TILES



9GP ROCKER WD LBE



9GP ROCKER WD HL



9GP ROCKER WD DBE

## SIZE

---

30x60 CM



# PRODUCT GUIDE

## ICONS

### TPOLOGY



### EDGE



### SURFACE STRUCTURE



Tiles with an uneven, irregular surface, with a structure perceptible to the eye and touch.

### FINISH



Pressed tiles without further work after firing

### SURFACE LOOK



Natural looking surface.

### INDICATIONS FOR USE



### SUGGESTED APPLICATIONS



Residential areas, hotel rooms, bathrooms




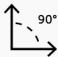


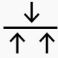











Indoor public areas subject to medium pedestrian traffic such as restaurants, bars, offices, shops, hotel public areas, convention rooms.

In printing, colour of the products may differ slightly from actual, pictures are only for reference.

# ROCKER SERIES

## TECHNICAL CHARACTERISTICS - PORCELAIN TILES (BIa - GL)

	Test Description	Standard Test Method	International Standard ISO 13006	RAK Ceramics Specifications	
				(Rectified)	(Unrectified)
	Length & Width	BS EN ISO 10545-2	+/- 0.6%	+/- 0.1%	+/- 0.3%
	Thickness	BS EN ISO 10545-2	+/- 5.0%	+/- 5.0%	+/- 5.0%
	Rectangle Squareness	BS EN ISO 10545-2	+/- 0.6%	+/- 0.2%	+/- 0.4%
	Straightness of sides	BS EN ISO 10545-2	+/- 0.5%	+/- 0.2%	+/- 0.3%
	Surface Flatness	BS EN ISO 10545-2	+/- 0.5%	+/- 0.3%	+/- 0.3%
	Water Absorption	BS EN ISO 10545-3	<=0.5%	<=0.4%	<=0.4%
	Modulus of Rupture	BS EN ISO 10545-4	>=35 N/mm <sup>2</sup>	>=40 N/mm <sup>2</sup>	>=40 N/mm <sup>2</sup>
	Breaking Strength	BS EN ISO 10545-4	>=1300N	>=1500N	>=1600N
	Resistance to surface abrasion	BS EN ISO 10545-6	Manufacturer to state Abrasion Class	PEI Class 2 -5	PEI Class 2 -5
	Linear Thermal Expansion	BS EN ISO 10545-8	<=9x10-60C-1	<=7x10-60C-1	<=7x10-60C-1
	Resistance to Thermal Shock	BS EN ISO 10545-9	No visible defect	No visible defect	No visible defect
	Crazing Resistance	BS EN ISO 10545-11	No crazing	No crazing	No crazing
	Frost Resistance	BS EN ISO 10545-12	No visible damage	No visible damage	No visible damage
	Resistance to chemicals	BS EN ISO 10545-13	No visible defect	No visible defect	No visible defect
	Resistance to stains	BS EN ISO 10545-14	Manufacturer to state class	Stain removed Min.class 4	Stain removed Min.class 4
	Colour Resistance to UV Light	DIN 51094	No change in color	No change in color	No change in color

**Note :** Shade variation across the batches is inherent to the manufacturing process and the pre-laying colour comparison is recommended

# RAK

CERAMICS

CARE LINE  
 **16630**

SERVING IN  
**150**  
COUNTRIES



SCAN TO DOWNLOAD  
**RAK CERAMICS  
ANDROID APP**  
TO BROWSE ALL TILES  
AND SANITARY WARE

RAK CERAMICS BANGLADESH LTD.

RAK Tower ( 7th, 8th, 9th & 10th Floor), Plot # 1/A, Jasimuddin Avenue, Sector # 3, Uttara, Dhaka-1230, Bangladesh.  
Tel: +880-2-58957393, 58952303 | Fax: +880-2-58957096 | E-mail: info.bdg@rakceramics.com

**RAKCERAMICS.COM**