

# High Tech Porcelain

High Performance Porcelain Product



**RAK**  
CERAMICS



High Tech  Porcelain

7HTP 2 TRAVERTINO

7HTP 3 SPIDER CRT

7HTP 1 DCREY

7HTP 4 CHARCOAL BK

# High Tech Porcelain Tiles

- HIGH PERFORMANCE TECHNICAL PRODUCTS FOR HEAVY TRAFFICKING AREA (PEI: CLASS 4)
- FULL BODY
- SUPER DURABILITY AGAINST EXTREME WEATHER CONDITION
- DESIGN PREFERRED BY ARCHITECT FOR BEAUTIFUL AESTHETIC



## HIGH TECH PORCELAIN

High Tech Porcelain is a ceramic product resulting from the application of the most advanced and innovative technology in the sector.

The High Tech Porcelain is glazed, is colored throughout its body, and is completely vitrified. That is why it is a product that, compared with other more traditional wall coverings (marble, granite, wood, slate, stone,) stands out above all for its versatility and use potentially under different conditions no matter how unfavorable they are.

Another characteristic that makes it a versatile product is the variety of available finishes: matte, non-slip, special traffic, rustic.

Aesthetically, it perfectly imitates marbles, granites, stones, clays, slates, and cement. And it is available in a wide range of formats: 40 x 40, 30 x 60, 30 x 30 cm, and with special thicknesses of up to 8 mm.

## WHY CHOOSE HIGH TECH PORCELAIN?

### INTEGRITY

This type of product, aside from its beauty and variety of available designs, has technical features that no other building material offers:

- Resistance to water, moisture, and frost.
- Resistance to sudden temperature changes.
- Bending strength with fixed and static loads.
- Resistance to impact, abrasion.
- Wear resistance due to heavy traffic and to rolling with mobile loads.

### SAFETY

- Negligible moisture expansion.
- Fireproof.
- Flame retardant.
- Absence of danger in case of fire.
- Electrical safety.

### HYGIENE AND HEALTH

Optimal conditions for obtaining impermeability to liquids required in places where the presence of water is constant. This way, it does not facilitate the presence of fungi or bacteria. Due to its low tendency to retain dirt, it presents optimal cleaning and asepsis characteristics. It is possible to use strong household cleaning products in order to ensure complete disinfection

### HEALTH AND WELL-BEING

- Lack of own or acquired odor.
- Resistance to the release of its own dust.
- Easy to clean acquired dust.
- Easy cleaning and maintenance.
- It is a product that, due to its capability as an electrical insulator, prevents the gathering of electrically active environmental dust.
- Suitable wherever there is an abundant use of water.
- It is the final installation: it requires no maintenance after it is installed.

High Tech  Porcelain

## WHERE CAN WE INSTALL THE HIGH TECH PORCELAIN?

The High Tech Porcelain can be installed both as flooring and as wall covering. Its use is recommended for architectural use due to its modularity and variety of formats.

Thanks to the aforementioned technical characteristics, this product can be considered as the most versatile existing ceramic product.

## FOR THESE REASONS, IT CAN BE INSTALLED IN:

Public areas subject to high traffic and/or heavy loads, whether static or mobile: airports, supermarkets, schools, universities, museums, banks, offices, restaurants, sports facilities.

Areas with extreme weather conditions either due to frost or to sudden temperature changes: outdoor, cold storage rooms, etc.  
Avant-garde and unique design architecture.

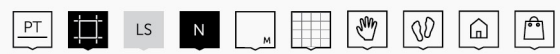
Places, spaces, and premises where hygiene and sanitation are particularly important: bathrooms, kitchens, pools, hospitals, and health centers in general.

One same model as flooring and wall covering. In full residential projects.

The location range is very broad. Each day there are new uses and applications for the variety of designs that this product can provide to the practical and most contemporary architecture that uses it. If you find it, you do not know the advantages of the product of the future.

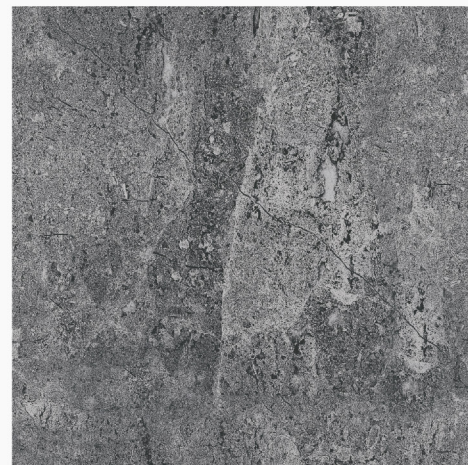


**HIGH TECH PORCELAIN**

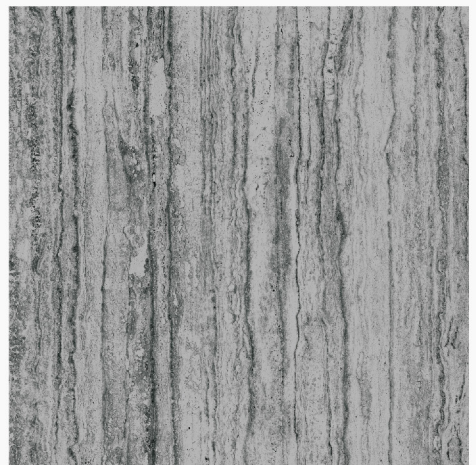


**FLOOR TILES | MATT SURFACE**

SIZE: 40 X 40 CM



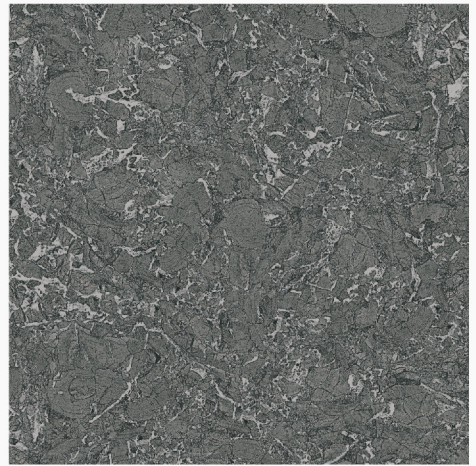
7HTP 1 DGREY



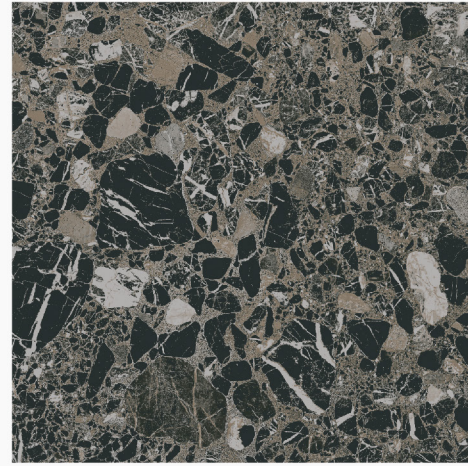
7HTP 2 TRAVERTINO



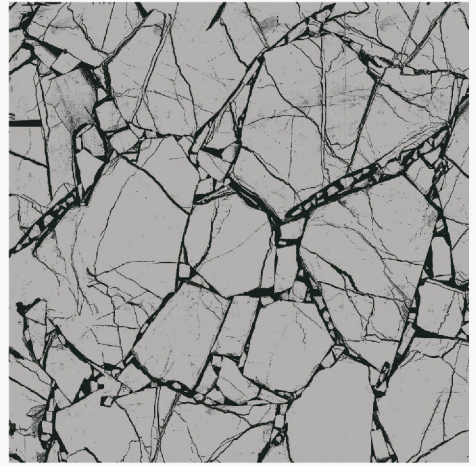
7HTP 3 FOSSIL GREY



7HTP 4 CHARCOAL BK



7HTP 5 STONE BLACK



7HTP 7 SPIDER GREY

High Tech  Porcelain



MODEL  
7HTP 4 CHARCOAL BK



## HIGH TECH PORCELAIN TILES

# TECHNICAL SPECIFICATIONS

| Test Description  | Standard Test Method | International Standard ISO 13006       | RAK Ceramics Specifications            |  |
|---|----------------------|--|--|--|
|   |                      |  | (Rectified)                            | (Unrectified)                          |
|  Length & Width                  | BS EN ISO 10545-2    | +/- 0.6%                               | +/- 0.1%                               | +/- 0.3%                               |
|  Thickness                       | BS EN ISO 10545-2    | +/- 5.0%                               | +/- 5.0%                               | +/- 5.0%                               |
|  Rectangle Squareness            | BS EN ISO 10545-2    | +/- 0.6%                               | +/- 0.2%                               | +/- 0.4%                               |
|  Straightness of sides           | BS EN ISO 10545-2    | +/- 0.5%                               | +/- 0.2%                               | +/- 0.3%                               |
|  Surface Flatness                | BS EN ISO 10545-2    | +/- 0.5%                               | +/- 0.2%                               | +/- 0.3%                               |
|  Water Absorption                | BS EN ISO 10545-3    | <=0.5%                                 | <=0.1%                                 | <=0.1%                                 |
|  Modulus of Rupture              | BS EN ISO 10545-4    | >=35 N/mm <sup>2</sup>                 | >=40 N/mm <sup>2</sup>                 | >=40 N/mm <sup>2</sup>                 |
|  Breaking Strength               | BS EN ISO 10545-4    | >=1300N                                | >=1500N                                | >=1600N                                |
|  Resistance to deep abrasion    | BS EN ISO 10545-7    | <=175/mm <sup>3</sup>                  | <=150/mm <sup>3</sup>                  | <=150/mm <sup>3</sup>                  |
|  Linear Thermal Expansion      | BS EN ISO 10545-8    | <=9x10 <sup>-6</sup> /°C <sup>-1</sup> | <=7x10 <sup>-6</sup> /°C <sup>-1</sup> | <=7x10 <sup>-6</sup> /°C <sup>-1</sup> |
|  Resistance to Thermal Shock   | BS EN ISO 10545-9    | No visible defect                      | No visible defect                      | No visible defect                      |
|  Frost Resistance              | BS EN ISO 10545-12   | No visible damage                      | No visible damage                      | No visible damage                      |
|  Resistance to chemicals       | BS EN ISO 10545-13   | No visible defect                      | No visible defect                      | No visible defect                      |
|  Resistance to stains          | BS EN ISO 10545-14   | Manufacturer to state class            | Stain removed Min. class 2             | Stain removed Min. class 2             |
|  Colour Resistance to UV Light | DIN 51094            | No change in color                     | No change in color                     | No change in color                     |

**Note :** Shade variation across the batches is inherent to the manufacturing process and the pre-laying colour comparison is recommended

CARE LINE  
☎ **16630**

SERVING IN  
**150**  
COUNTRIES



RAK CERAMICS BANGLADESH LTD.  
RAK Tower (7th, 8th & 9th Floor), Plot # 1/A, Jasimuddin Avenue, Sector # 3, Uttara , Dhaka-1230, Bangladesh.  
Tel: +880-2-58957393, 58952303 | Fax: +880-2-58957096 | E-mail: info.bgd@rakceramics.com

**RAKCERAMICS.COM**